



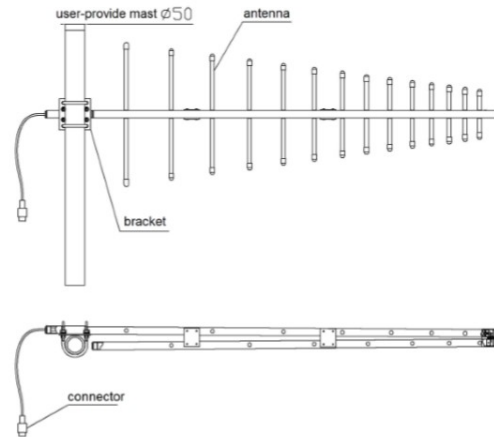
## SUNNY YAGI ANTENNA FOR 380-870MHz, 11dBi

**Model : SUN-YGA-380'870-11-N(F)**

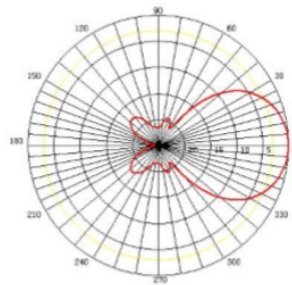
**Antenna Outlook**



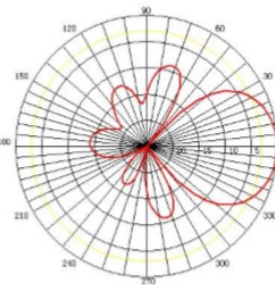
**Installation Sketch**



Model	SUN-YGA-380'870-11-N(F)
<b>Electrical specifications</b>	
Frequency range (MHz)	380-870
Polarization	Vertical
Gain (dBi)	11
Vertical Beamwidth (°)	50
Horizontal Beamwidth (°)	65
Front-to-back ratio (dB)	≥22
Impedance (Ω)	50
VSWR	≤1.5
Maximum input power(W)	200
<b>Mechanical specifications</b>	
Connector	N-female
Color	Aluminum alloy primitive colors or black
Max. Wind Velocity	150km/h
Wind Load Figure	7.5kgf @ 150km/h
Dimension (cm)	116x36x65
Weight (kg)	1.6
Mounting Method	Pole Mount
Pole Dimension (mm)	Ø40 ~ Ø50



**E Plane**



**H Plane**

Technical data are subjected to change without notice – File : SUN-YGA-380'870-11-N(F) datasheet 2021V1.0