

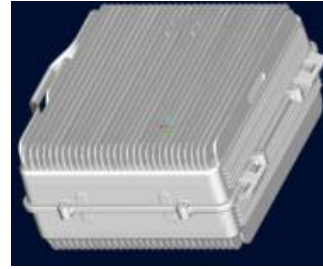


SUNNY 37dBm IDEN High Power Repeater

Model : SRP-800-FB-37

Highlight

- ✧ FCC Compliance
- ✧ Single Band Full Band Repeater For IDEN
- ✧ Remote control by GSM/WCDMA or PSTN modem



Electrical Specifications

| Model | | SRP-800-FB-37 | |
|------------------------------------|---------------|---------------|----------|
| Items | | Specification | |
| | | Uplink | Downlink |
| Frequency (MHz) | | 806-825 | 851-870 |
| Output Power (dBm) | | 33 | 37 |
| Ripple in-band (dB) | | ±3 | |
| Gain(dB) | | 90±3 | |
| Gain Adjustment Step (dB) | | 1dB | |
| Gain Adjustment Range(dB) | | ≥30 | |
| Gain Adjustable Linear(dB) | 10dB | ±1.0 | |
| | 20dB | ±1.0 | |
| | 30dB | ±1.5 | |
| ALC (dB) | | 20 | |
| Noise Figure (dB) | | ≤5 | |
| Time Delay (us) | | ≤5 | |
| VSWR | | 1.5 | |
| Frequency Tolerance (ppm) | | ≤0.05 | |
| Peak Phase Error(°) | | ≤20 | |
| RMS Phase Error (°) | | ≤5 | |
| Inter-modulation Attenuation (dBc) | | ≤-13dBm | |
| Spurious Emission(dBm) | 9kHz-1GHz | ≤-36 | ≤-36 |
| | 1GHz-12.75GHz | ≤-30 | ≤-30 |

Mechanical Specifications

| | |
|----------------------------|--|
| I/O Port | N-Female |
| Impedance | 50ohm |
| Operating Temperature | -25°C ~+55°C |
| Relative Humidity | Max. 95% |
| MTBF | Min. 100000 hours |
| Environment | IP65 |
| Dimension | 500*440*235mm |
| Weight | 27Kg |
| Power Supply | DC-48V/AC220V(50Hz)/AC110V(60Hz)(±15%) |
| Remote Monitoring Function | Real-time alarm for Door Status, Temperature, Power Supply, VSWR, Output Power |
| Remote Control Module | RS232 or RJ45 + Wireless or PSTN Modem + Chargeable Li-ion Battery |

Technical data are subjected to change without notice – File: SRP-800-FB-37 datasheet 2016V1.0