

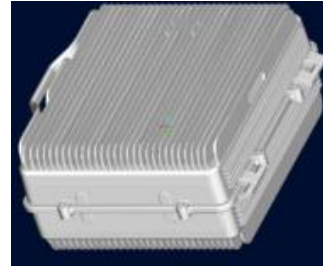


SUNNY 37dBm IDEN High Power Line Amplifier

Model : SRP-800-FB-37(LA)

Highlight

- ✧ FCC Compliance
- ✧ Single Band Full Band Repeater For IDEN
- ✧ Remote control by GSM/WCDMA or PSTN modem



Electrical Specifications

Model		SRP-800-FB-37(LA)	
Items	Specification		
	Uplink	Downlink	
Frequency (MHz)	806-825	851-870	
Output Power (dBm)	0	37	
Ripple in-band (dB)	±3		
Gain(dB)	45±3		
Gain Adjustment Step (dB)	1dB		
Gain Adjustment Range(dB)	≥30		
Gain Adjustable Linear(dB)	10dB	±1.0	
	20dB	±1.0	
	30dB	±1.5	
ALC (dB)	20		
Noise Figure (dB)	≤5		
Time Delay (us)	≤5		
VSWR	1.5		
Frequency Tolerance (ppm)	≤0.05		
Peak Phase Error(°)	≤20		
RMS Phase Error (°)	≤5		
Inter-modulation Attenuation (dBc)	≤-13dBm		
Spurious Emission(dBm)	9kHz-1GHz	≤-36	≤-36
	1GHz-12.75GHz	≤-30	≤-30

Mechanical Specifications

I/O Port	N-Female
Impedance	50ohm
Operating Temperature	-25°C ~+55°C
Relative Humidity	Max. 95%
MTBF	Min. 100000 hours
Environment	IP65
Dimension	500*440*235mm
Weight	27Kg
Power Supply	DC-48V/AC220V(50Hz)/AC110V(60Hz)(±15%)
Remote Monitoring Function	Real-time alarm for Door Status, Temperature, Power Supply, VSWR, Output Power
Remote Control Module	RS232 or RJ45 + Wireless or PSTN Modem + Chargeable Li-ion Battery

Technical data are subjected to change without notice – File: SRP-800-FB-37(LA) datasheet 2016V1.0