



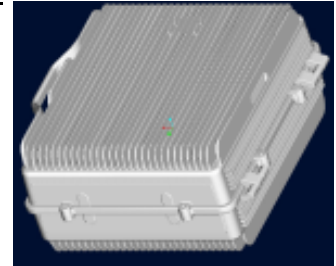
## SUNNY SRP-800 Series Full Band IDEN 40dBm High Power Fiber Optical Repeater

### Model: SRP-800-FB-40-MUx and SRP-800-FB-40-RU

Where x is supporting the number of RU by single MU, it is 2, 4, 6 or 8

#### Highlight

- ✧ FCC Compliance
- ✧ Single Band Full Band Repeater For IDEN
- ✧ Remote control by GSM/WCDMA or PSTN modem



#### Electrical Specifications

Items	Specification	
	Uplink	Downlink
Frequency (MHz)	806-825	851-870
Output Power (dBm)	0	40
Ripple in-band (dB)	±3	
Gain(dB)	65±3@0dB optical loss	
Gain Adjustment Step (dB)	1dB	
Gain Adjustment Range(dB)	≥30	
Gain Adjustable Linear(dB)	10dB	±1.0
	20dB	±1.0
	30dB	±1.5
ALC (dB)	20	
Noise Figure (dB)	≤5	
Time Delay (us)	≤5	
VSWR	1.5	
Frequency Tolerance (ppm)	≤0.05	
Peak Phase Error(°)	≤20	
RMS Phase Error (°)	≤5	
Inter-modulation Attenuation (dBc)	≤-13dBm	
Spurious Emission(dBm)	9kHz-1GHz	≤-36
	1GHz-12.75GHz	≤-30

#### Optical Specifications

Optical Output Power	0~3dBm
Optical length	DL: 1310nm, UL: 1550nm
Optical Loss	≤10dB /Includes the loss of the optical splitter
Optical Connector	FC/APC
Number of Optical Connector on MU	2 or 4 or 6 or 8
Number of Optical Connector on RU	1

#### Power Supply and Mechanical Specifications

Model	SRP-800-FB-40-MUx	SRP-800-FB-40-RU
Power Supply	AC220V±60V,45~55Hz	
Dimension	435mm*312mm*90mm	500*440*235mm
Weight	≤8kg	≤28kg
Max. Power Consumption	≤40W	≤300W
Operating Temperature	-5~+45℃	-25~+55℃
Operating Humidity	≤85%	≤95%
Environmental Class	IP20	IP65
RF Connector	N-Female, 50ohm	
MTBF	≥50000 hours	
Remote Monitoring Function	Real-time alarm for Temperature, Power Supply, VSWR, Output Power	
Remote Control Module	RS232 or RJ45 + Wireless or PSTN Modem + Chargeable Li-ion Battery	

Technical data are subjected to change without notice – File: SRP-800-FB-40(MU\_RU) datasheet 2018V1.0